

XCSERIES

REVEL®



UNCOMPROMISING REVEL SOUND
FOR YOUR BACKYARD AND BEYOND

REVEL OUTDOOR SYSTEMS 2018

No longer must you sacrifice sound quality in the name of durability and style. The Revel XC Series combines Revel's award-winning sound and design with durability that survives the toughest elements. Perfectly executed systems that utilize Revel Landscape products combined with Crown and Lexicon Amplifiers are curated together for small, intimate spaces to large multi-zoned outdoor areas. These systems are suitable for any outdoor location and any environment that heat, cold, dampness, humidity, or wetness is a factor.

The new models that make up the Revel Extreme Climate Series are the L41XC 4-inch (100mm) Landscape Satellite, the L42XC Dual 4-inch (100mm) Landscape Bollard and the L12XC 12-inch (300mm) Burial Subwoofer. All offer the versatility, durability and high-performance that an outdoor environment demands without compromising sound quality. Designed with custom installation in mind, the XC Landscape models include low-impedance or 70V variable tap capability and integrated and independently controlled low-voltage lighting (L42XC only). This great-sounding line is also visually appealing and built-to-last with a durable Earthen Brown finish and IP67 weather protection ratings for the L41XC and L42XC satellites. Combined with Crown CDi2|300 CDi2|600 CDi4|300BL and the Lexicon DD-8+ amplifiers, the XC Landscape models provide the ultimate solution for premium outdoor audio.

Suggested XC Landscape systems can be customized by adding or removing components to suit any application. Revel offers design services to assist in creating the proper system layout for a given job. Systems may be zoned for independent source and volume control of separate areas.



L41XC Landscape Satellite Loudspeaker

The L41XC is a compact 2-way satellite using a 4-inch Micro-Ceramic Composite (MCC™) woofer and a 0.75-inch MCC tweeter. These satellite loudspeakers with 4-inch (100mm) woofers provide controlled horizontal and vertical coverage and may be aimed towards listening positions for direct sound or alternatively pointed towards wall surfaces for ambient sound. A 70V transformer with multiple taps and 4-ohm bypass is included for flexible system configuration and compatibility with long cable runs. The Aluminum enclosure is finished in Earthen Brown and meets IP67 ratings for dust and water exposure. A 12-inch garden spike is included along with a deck mount bracket allowing the L41XC to be ground or surface mounted.



L42XC Landscape Bollard Loudspeaker

The L42XC is a 2-way bollard satellite with dual 4-inch MCC woofers and a 1-inch MCC tweeter in a D'Appolito MTM configuration for controlled directivity in outdoor spaces. The horizontal dispersion is very wide while vertical dispersion is focused and aimed towards listening height. It includes a 70V transformer with multiple taps and 4-ohm bypass and the Earthen Brown Aluminum enclosure meets IP67 durability ratings. The L42XC includes 360-degree low-voltage LED down-lighting for use in path and general landscape lighting applications. The dimmable lighting operates independently of the audio and can be integrated into standard low-voltage lighting systems. The bollard shape allows the L42XC to be installed in the ground up to the depth of the grille as well as mounted to decks and hard surfaces with the optional deck mount bracket.



L42XC

L12XC 12-inch Burial Subwoofer

The L12XC direct-burial subwoofer. A 12-inch bandpass enclosure, the L12XC can be operated in 6-ohm or constant line-voltage systems with the separate 70V multi-tap transformer disguised as a garden rock for easy convenience during system calibration. The Earthen Brown canopy assembly sits above-ground and allows the subwoofer to seamlessly integrate into landscape environments while still delivering powerful bass response.



L12XC

THE SYSTEMS

System 1

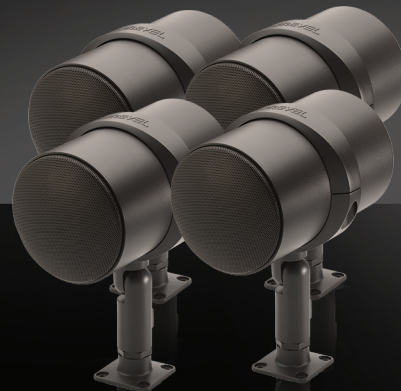
Revel XC Small Satellite System

Designed for patios or small sized backyard areas

Satellite loudspeakers with 4-inch (100mm) woofers provide controlled horizontal and vertical coverage and may be aimed towards listening positions for direct sound or alternatively pointed towards wall surfaces for ambient sound. 12-inch (300mm) ground spikes are included with each L41XC along with deck-mount brackets for mounting to hard surfaces such as eaves, pergolas, trees, and more. Low-impedance or 70V up to 60W variable tap operation. Covers on average a 3,600 square feet (335 meters²) area. Suitable for background and low-level listening applications.

XCSERIES

CDi2 | 300



L41XC

Product BOM	Model	Quantity	Retail Each	Retail Extended
Amplifier	CDi2 300	1	\$1,098	\$1,098
Satellite	L41XC	4	\$750	\$3,000
Packaged System				\$4,098

THE SYSTEMS

System 2

Revel XC Medium Subwoofer Satellite System

Designed for small-to-medium sized backyard areas

This system improves on the XC Landscape Small Satellite System by adding two additional L41XC speakers and an L12XC subwoofer. 12-inch (300mm) ground spikes are included with each L41XC along with deck-mount brackets for mounting to hard surfaces such as eaves, pergolas, trees, and more. L12XC burial subwoofer adds deep bass for improved system dynamics and output. Low-impedance or 70V up to 60W and 30W variable tap operation. (L12XC includes 70V 250W variable tap.) Covers on average a 5,400 square feet (500 meters²) area. Suitable for background or foreground listening at low-to-moderate listening levels.

XC SERIES



Product BOM	Model	Quantity	Retail Each	Retail Extended
Amplifier	CDi2 300	1	\$1,098	\$1,098
Satellite	L41XC	6	\$750	\$4,500
Subwoofer	L12XC	1	\$3,000	\$3,000
Packaged System				\$8,598

THE SYSTEMS

System 3

Revel XC Medium Bollard Satellite System

Designed for medium sized backyard areas

L42XC bollard satellite loudspeakers with dual 4-inch (100mm) woofers provide more bass and greater coverage than the smaller L41XC. Horizontal dispersion is very wide while vertical dispersion is focused and aimed towards listening height. The L42XC may be installed directly on a hard surface such as a deck (requires optional L42MXC mounting plate) or partially buried in soil up to the bottom of the grille for a reduced visual appearance. Included low-voltage 360-degree down-lighting provides general or path lighting with independent control from the audio. (Requires third-party low-voltage lighting transformer power supply – not included.) L12XC burial subwoofer adds deep bass for improved system dynamics and output. Low-impedance or 70V up to 60W variable tap operation. (L12XC includes 70V 250W variable tap.) Covers on average a 8,100 square feet (750 meters²) area. Suitable for background or foreground listening at low-to-moderate listening levels.

XC SERIES



Product BOM	Model	Quantity	Retail Each	Retail Extended
Amplifier	CDi2 300	1	\$1,398	\$1,098
Satellite	L42XC	4	\$1,250	\$5,000
Subwoofer	L12XC	1	\$3,000	\$3,000
Packaged System				\$9,098

THE SYSTEMS

System 4

Revel XC Performance System Low Impedance

Designed for medium to large sized outdoor entertainment areas

This system is designed to give greater dynamic performance using low impedance satellite connections as opposed to 70V line voltage and covers a medium to large sized area with wire runs under 100 feet (30m). It utilizes six L41XC satellite speakers and an additional two L42XC bollard speakers for added performance. Two independently powered L12XC 12-inch (300mm) burial subwoofers provide even bass performance with separate delay and tuning for each sub location. All satellite and bollard speakers are driven by the multichannel IP-controllable Lexicon DD-8+ amplifier with additional power for subwoofers from the Crown CDi2|300. Suitable for background and foreground listening at moderate listening levels.

XCSERIES



Product BOM	Model	Quantity	Retail Each	Retail Extended
Amplifier	DD-8+	1	\$3,000	\$3,000
Satellite	L41XC	6	\$750	\$4,500
Satellite	L42XC	2	\$1,250	\$2,500
Subwoofer	L12XC	2	\$3,000	\$6,000
Amplifier	CDi2 300	1	\$1,098	\$1,098
Packaged System				\$17,098

THE SYSTEMS

System 5

Revel XC Performance System 70-volt

Designed for medium to large sized outdoor entertainment areas

This system has the same speakers as the Revel XC Performance System Low Impedance but instead utilizes the Crown CDi2|600 amplifier to operate in 70-volt for longer wire runs.

XC SERIES



Product BOM	Model	Quantity	Retail Each	Retail Extended
Satellite	L41XC	6	\$750	\$4,500
Satellite	L42XC	2	\$1,250	\$2,500
Subwoofer	L12XC	2	\$3,000	\$6,000
Amplifier	CDi2 600	1	\$1,398	\$1,398
Packaged System				\$14,398

THE SYSTEMS

System 6

Revel XC Party Subwoofer Satellite System

Pure low-impedance system with CDi2|300 and CDi4|300BL

Designed for large sized backyard entertainment areas and around swimming pools and spas

L42XC bollard satellite loudspeakers with dual 4-inch (100mm) woofers provide more bass and greater coverage than the smaller L41XC. Horizontal dispersion is very wide while vertical dispersion is focused and aimed towards listening height. The L42XC may be installed directly on a hard surface such as a deck (requires optional L42MXC mounting plate) or partially buried in soil up to the bottom of the grille for a reduced visual appearance. Included low-voltage 360-degree down-lighting provides general or path lighting with independent control from the audio. (Requires third-party low-voltage lighting transformer power supply – not included.) L12XC burial subwoofer adds deep bass for improved system dynamics and output. Low-impedance or 70V up to 60W variable tap operation. (L12XC includes 70V 250W variable tap.) Covers on average a 16,200 square feet (1,500 meters²) area. Suitable for background or foreground listening at moderate-to-loud listening levels.

XC SERIES

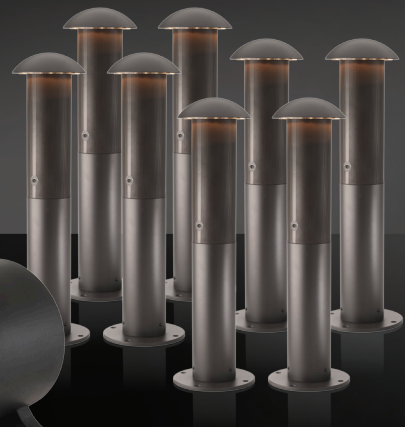
CDi2 | 300



CDi4 | 300BL



L12XC



L42XC

Product BOM	Model	Quantity	Retail Each	Retail Extended
Amplifier	CDi2 300	1	\$1,098	\$1,098
Amplifier	CDi4 300BL	2	\$2,150	\$4,300
Satellite	L42XC	8	\$1,250	\$10,000
Subwoofer	L12XC	2	\$3,000	\$6,000
Packaged System				\$21,398

THE SYSTEMS

XC SERIES

System 7

Revel XC Entertainer Subwoofer Satellite System

Designed for large-to-extra-large sized backyard entertainment areas including pools and spas L41XC satellite loudspeakers with 4-inch (100mm) woofers provide controlled horizontal and vertical coverage and may be aimed towards listening positions for direct sound or alternatively pointed towards wall surfaces for ambient sound. 12-inch (300mm) ground spikes are included with each L41XC along with deck-mount brackets for mounting to hard surfaces such as eaves, pergolas, trees, and more. L42XC bollard satellite loudspeakers with dual 4-inch (100mm) woofers provide more bass and greater coverage than the smaller L41XC. Horizontal dispersion is very wide while vertical dispersion is focused and aimed towards listening height. The L42XC may be installed directly on a hard surface such as a deck (requires optional L42MXC mounting plate) or partially buried in soil up to the bottom of the grille for a reduced visual appearance. Included low-voltage 360-degree down-lighting provides general or path lighting with independent control from the audio. (Requires third-party low-voltage lighting transformer power supply – not included.) L12XC burial subwoofer adds deep bass for improved system dynamics and output. Low-impedance or 70V up to 60W variable tap operation. (L12XC includes 70V 250W variable tap.) Covers on average a 22,950 square feet (2,130 meters²) area. Suitable for background or foreground listening at moderate-to-loud listening levels.



Product BOM	Model	Quantity	Retail Each	Retail Extended
Amplifier	CDi4 300BL	3	\$2,150	\$6,450
Satellite	L41XC	12	\$750	\$9,000
Satellite	L42XC	6	\$1,250	\$7,500
Subwoofer	L12XC	4	\$3,000	\$12,000
Packaged System				\$34,950

SPECIFICATIONS

Feature	L41XC	L42XC	L12XC
Description	Compact 2-way Extreme Climate Satellite Speaker	2-way Extreme Climate Bollard Speaker with Integrated LED Lighting	Direct Burial Subwoofer
Low Frequency Driver Size and Material	4" Micro Ceramic Composite (MCC) Aluminum Cone Woofer	Two 4" Micro Ceramic Composite (MCC) Aluminum Cone Woofers	12" Anodized Aluminum Cone Subwoofer
High Frequency Driver Size and Material	0.75" Micro Ceramic Composite (MCC) Aluminum Dome Tweeter	1" Micro Ceramic Composite (MCC) Aluminum Dome Tweeter	N/A
Recommended Amplifier Power (Standard Low Impedance Amps)	60W RMS; 100W RMS with High Pass Filter @100Hz	60W RMS; 125W RMS with High Pass Filter @80Hz	250W RMS
70V Transformer Taps	7.5W, 15W, 30W, 60W	7.5W, 15W, 30W, 60W	31.75W, 62.5W, 125W, 250W
Voltage	70V	70V	70V
Rated Impedance	4 Ohm in Bypass mode	4 Ohm in Bypass mode	6 Ohm without transformer
Loudspeaker Sensitivity	83dB (2.83V @1M) in Bypass mode	86dB (2.83V @1M) in Bypass mode	86dB (2.83V @1M) without transformer
Frequency Response	100Hz – 20kHz @-3dB	80Hz – 20kHz @-3dB	25Hz – 100Hz @-3dB
Crossover Frequency	5.5kHz	2.9kHz	N/A
Dispersion pattern horizontal	70 degrees	120 degrees	N/A
Dispersion pattern vertical	60 degrees	60 degrees	N/A
Dimension Details	23.3cm (9.2") speaker body length 13.2cm (5.2") speaker body diameter 28.5cm (11.3") height with clamp and base 59cm (23.2") height with clamp and spike	13.2cm (5.2") speaker body diameter 21.8cm (8.58") hood diameter 25cm (9.8") mounting base diameter 85.5cm (33.7") height with base MXC Mounting Bracket sold separately Length 25cm (9.8") Width 25cm (9.8") Height 5.8cm (2.3")	53.3cm (20.77") enclosure length 88.7cm (35") total length including enclosure, elbow, port and hood 45.5cm (18") enclosure diameter 50cm (19.7") enclosure height with feet 87.8cm (34.57") total height including enclosure, port and hood
Dimension Totals	Length 23.3cm (9.2") Width 16.4cm (6.5") Height 29.5cm (11.3")	Length 21.8cm (8.58") Width 21.8cm (8.58") Height 85.5cm (33.7")	Length 88.7cm (35") Width 45.5cm (18") Height 87.8cm (34.6")
Weight	Speaker and clamp assembly – 4.5kg (9.9 lbs)	Speaker – 9.4kg (20.7 lbs) MXC Mounting Bracket 1kg (2.2 lbs)	Speaker and port assembly – 30.1kg (66.4 lbs) Rock Transformer – 3.7kg (8.2 lbs)

Input Sensitivity

Amp Model		CDi2 300	CDi4 300	CDi2 600
8Ω	37dB Gain Mode	0.7Vrms (-0.8dBu, -3.0dBV)	0.7Vrms (-0.8dBu, -3.0dBV)	0.7Vrms (-0.8dBu, -3.0dBV)
	34dB Gain Mode	1.0Vrms (2.2dBu, 0.0dBV)	1.0Vrms (2.2dBu, 0.0dBV)	1.0Vrms (2.2dBu, 0.0dBV)
	26dB Gain Mode	2.5Vrms (10.2dBu, 8.0dBV)	2.5Vrms (10.2dBu, 8.0dBV)	2.5Vrms (10.2dBu, 8.0dBV)
70Vrms	37dB Gain Mode	1.0Vrms (2.2dBu, 0.0dBV)	1.0Vrms (2.2dBu, 0.0dBV)	1.0Vrms (2.2dBu, 0.0dBV)
	34dB Gain Mode	1.4Vrms (5.2dBu, 3.0dBV)	1.4Vrms (5.2dBu, 3.0dBV)	1.4Vrms (5.2dBu, 3.0dBV)
	26dB Gain Mode	3.5Vrms (13.2dBu, 11.0dBV)	3.5Vrms (13.2dBu, 11.0dBV)	3.5Vrms (13.2dBu, 11.0dBV)
100Vrms	37dB Gain Mode	1.4Vrms (5.2dBu, 3.0dBV)	1.4Vrms (5.2dBu, 3.0dBV)	1.4Vrms (5.2dBu, 3.0dBV)
	34dB Gain Mode	2.0Vrms (8.2dBu, 6.0dBV)	2.0Vrms (8.2dBu, 6.0dBV)	2.0Vrms (8.2dBu, 6.0dBV)
	26dB Gain Mode	5.0Vrms (16.2dBu, 14.0dBV)	5.0Vrms (16.2dBu, 14.0dBV)	5.0Vrms (16.2dBu, 14.0dBV)

Output Power: Dual Mode – All Channels Driven

Amp Model	CDi2 300	CDi4 300	CDi2 600
Channels	2	4	2
2Ω	150W	150W	300W
4Ω	300W	300W	600W
8Ω	300W	300W	600W
16Ω	150W	150W	300W
70Vrms	300W	300W	600W
100Vrms	300W	300W	600W

Minimum Guaranteed Power (1kHz, all channels driven, max distortion 0.5%, duration 0.5 seconds, 120 – 240Vrms ~50/60Hz)

Output Power: Bridge Mono Mode – All Channels Driven

Amp Model	CDi2 300	CDi4 300	CDi2 600
4Ω	300W	300W	600W
8Ω	600W	600W	1200W
16Ω	600W	600W	1200W
140Vrms	600W	600W	1200W
200Vrms	600W	600W	1200W

Minimum Guaranteed Power (1kHz, all channels driven, max distortion 0.5%, duration 0.5 seconds, 120 – 240Vrms ~50/60Hz)

Performance Specifications

Specification Description	CDi2 300	CDi4 300	CDi2 600
Digital Signal Processing	96kHz, 32-bit floating point	96kHz, 32-bit floating point	96kHz, 32-bit floating point
Voltage Gain (at maximum level setting) 4/8 Ω , 70Vrms and 100Vrms Operation	34dB	34dB	34dB
Frequency Response (8 Ω , 20Hz - 20kHz)	+/-0.5dB	+/-0.5dB	+/-0.5dB
BLU link Signal-to-Noise Ratio (ref. rated power, 100V, 20Hz - 20kHz)	>108dB	>108dB	>108dB
Total Harmonic Distortion (at full rated power, from 20Hz - 20kHz)	0.35%	0.35%	0.35%
Analog Input Signal to Noise Ratio (ref. rated power, 100V, 20Hz - 20kHz)	>104dB	>104dB	>104dB
Intermodulation Distortion (60Hz and 7kHz at 4:1, from - 30dB to full rated power)	\leq 0.35%	\leq 0.35%	\leq 0.35%
Damping Factor (20Hz to 100Hz)	>1000	>1000	>1000
Crosstalk (below rated power, 20Hz to 1kHz)	>80dB	>80dB	>80dB
Common Mode Rejection (20Hz to 1kHz, typical)	>70dB	>70dB	>70dB
DC Output Offset (with inputs shorted)	\pm 10mV	\pm 10mV	\pm 10mV
Input Impedance (Nominally balanced, nominally unbalanced)	20 k Ω balanced, 10 k Ω unbalanced	20 k Ω balanced, 10 k Ω unbalanced	20 k Ω balanced, 10 k Ω unbalanced
Maximum Input Level (Low Amp Gain Mode)	+20dBU	+20dBU	+20dBU
Required AC Mains (\pm 10%)	100V – 240V~ 50/60Hz	100V – 240V~ 50/60Hz	100V – 240V~ 50/60Hz
Cooling	Continuously variable speed forced air, front-to-back airflow	Continuously variable speed forced air, front-to-back airflow	Continuously variable speed forced air, front-to-back airflow
Power Supply Connector	Standard IEC type 320 inlet for detachable connector 100 – 240V~	Standard IEC type 320 inlet for detachable connector 100 – 240V~	Standard IEC type 320 inlet for detachable connector 100 – 240V~
Load Impedance Stereo/Dual Mode	2 Ω - 16 Ω ; 70Vrms and 100Vrms	2 Ω - 16 Ω ; 70Vrms and 100Vrms	2 Ω - 16 Ω ; 70Vrms and 100Vrms
Load Impedance Bridge Mono	4 Ω - 16 Ω ; 140Vrms and 200Vrms	4 Ω - 16 Ω ; 140Vrms and 200Vrms	4 Ω - 16 Ω ; 140Vrms and 200Vrms
Maximum Fan Noise (re dB SPL @ 1M)	51dBA	51dBA	51dBA
Weight	14.56 lbs (6.6kg)	16.13 lbs (7.31kg)	14.56 lbs (6.6kg)



HARMAN International Industries, Incorporated.
8500 Balboa Blvd. Northridge, CA 91329 USA
www.revelspeakers.com

©2018 HARMAN International Industries, Incorporated. Revel and the Revel logo are trademarks of HARMAN International Industries, Incorporated in the United States and or other countries. Features, specifications and appearance are subject to change without notice.